

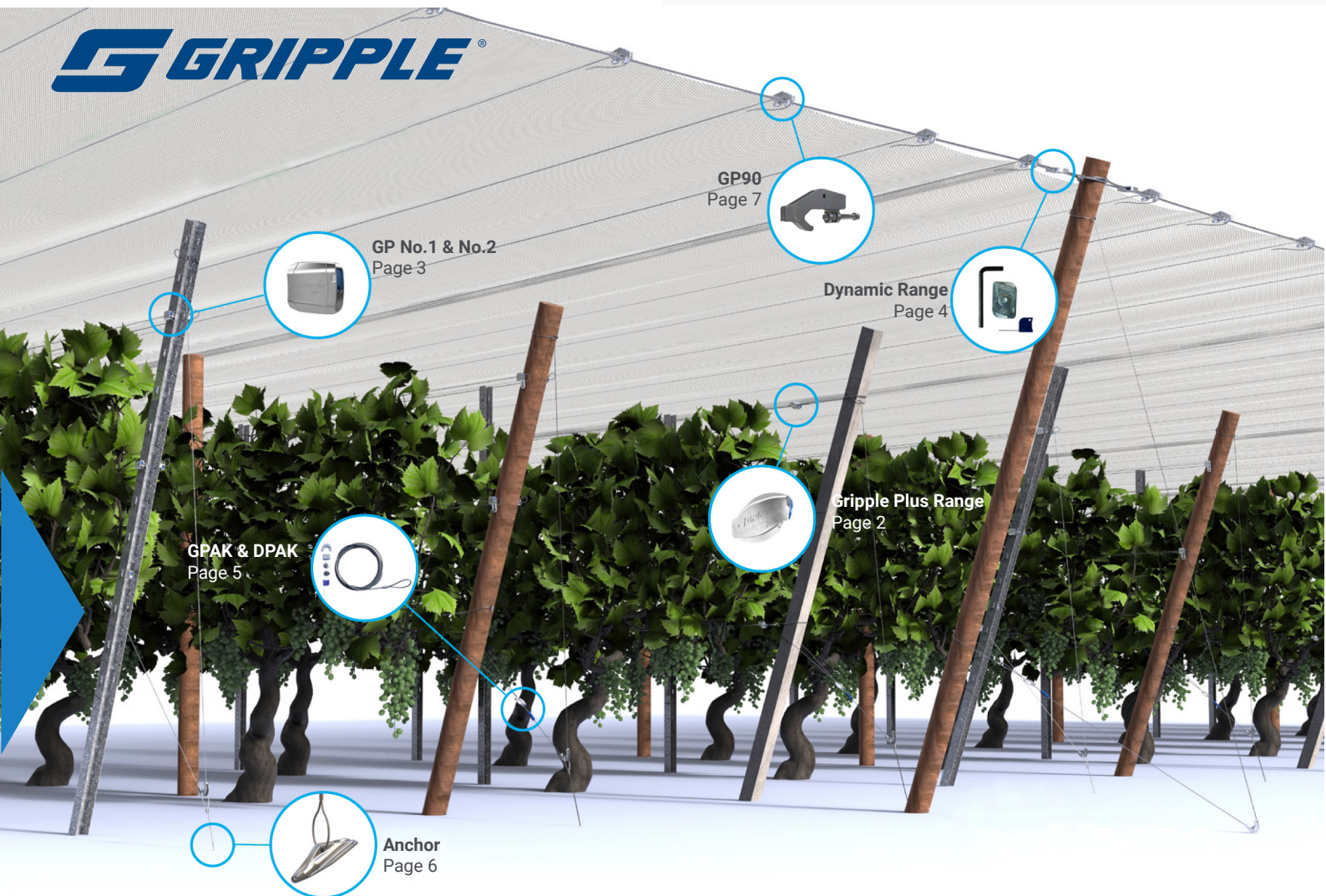


# GRIPPLE ORCHARD TRELLISING SOLUTIONS

## SPECIFICATION SHEET

As market leader in the joining and tensioning of wire, Gripple is renowned for providing innovative, cost-effective solutions for trellising applications. Gripple trellising products replace traditional methods, generating time and labour savings. Our range of products work with a wide variety of wires across all types of trellising.

- Tension
- Repair
- Anchor
- Brace





## Gripple Plus Range

The Gripple Plus range of wire joiners and tensioners is suitable for all trellis applications.

- Join and tension in one
- Features Jumbo, developed specifically for high load applications
- Ideal for use on high tensile and mild steel trellis wire
- Designed for high load holding and corrosion resistance
- Easily re-tensioned year-after-year



*Gripple Plus Medium - Used to terminate trellising wire around a wooden post*



*Gripple Plus Medium - Wire repair.*



*Gripple Plus Medium - Standard join*

| PRODUCT                    | WIRE RANGE      | STANDARD WIRE GAUGE | MAXIMUM WORKING LOAD |
|----------------------------|-----------------|---------------------|----------------------|
| <b>Gripple Plus Small</b>  | 1.40mm - 2.20mm | 17SWG - 14SWG       | 300kg                |
| <b>Gripple Plus Medium</b> | 2.00mm - 3.25mm | 14SWG - 10SWG       | 400kg                |
| <b>Gripple Plus Large</b>  | 3.25mm - 4.20mm | 10SWG - 7½ SWG      | 600kg                |
| <b>Jumbo</b>               | 2.50mm - 3.15mm | 12½ SWG - 10SWG     | 600kg                |



### GP No.1 & No.2

The Gripple GP No. 1 and No. 2 are designed with a flat leading edge to create a stable end stop for trellises which use metal end posts.

- Terminate and tension in one
- Ideal for use on steel wire and nylon monofilament
- High grade ceramic roller for corrosion resistance
- Spare integral channel allows safe tail wire return
- Tensioned using a Torq Tool and Adaptor in recessed applications



GP No.1 - Terminating trellis wire at a metal end post



Adaptor - For use when the tensioner is installed on the inside of the post

| PRODUCT | WIRE DIAMETER   | STANDARD WIRE GAUGE | STANDARD WIRE GAUGE |
|---------|-----------------|---------------------|---------------------|
| GP No.1 | 1.80mm - 3.00mm | 15SWG - 11SWG       | 400kg               |
| GP No.2 | 3.00mm - 4.20mm | 10½ SWG - 7½ SWG    | 600kg               |

Product not held in stock, can be ordered may affect lead times

Copyright © 2018 McVeigh Parker. All Rights Reserved.



## Dynamic Range

The Gripple Dynamic Range of fasteners and tensioners is ideal for high load anchoring, structural support and bracing

- High load performance for safety and security
- Join and tension in one
- Integral lock; one action locks the wire in both channels simultaneously
- High grade ceramic roller for corrosion resistance
- Available in ready to use kits (DPAK) for a fast and secure bracing solution



*Dynamic 6 - Post bracing*



*Dynamic 6 - Tensioning using contractor tool*

| TYPE      | WIRE DIAMETER | MAXIMUM WORKING LOAD |
|-----------|---------------|----------------------|
| Dynamic 4 | 4.00mm        | 750kg                |
|           | 4.75mm        | 1,000kg              |
| Dynamic 6 | 6.00mm        | 1,750kg              |

Product not held in stock, can be ordered may affect lead times

Copyright © 2018 McVeigh Parker. All Rights Reserved.



## GPAK & DPAK

The Gripple Plus Anchor Kit (GPAK) and Dynamic Post Anchor Kit (DPAK) are supplied as ready-to-use kits comprising a pre-cut, fused length of wire rope and a Gripple tensioner.

- Suitable for wooden, metal and concrete post bracing
- Dual brace points for even load transfer
- Easily re-tensioned year-after-year
- Manufactured with zinc aluminium wire rope for corrosion resistance • Consistent, professional finish



*GPAK - Installed in a loop format with choke knot on a wooden post*



*DPAK - Installed in a loop format with choke knot on a concrete post.*

| PRODUCT                               | KIT CONTENTS                               | WIRE DIAMETER | WIRE LENGTH | MAX WORKING LOAD |
|---------------------------------------|--------------------------------------------|---------------|-------------|------------------|
| <b>GPAK Classic<br/>(Wooden Post)</b> | Looped Wire Rope<br>Gripple Plus Tensioner | 4.0mm         | 5.0m        | 600kg            |
|                                       |                                            |               | 5.0m        | 600kg            |
| <b>DPAK 4</b>                         | Dynamic 4 with Wire Rope                   | 4.0mm         | 5.0m        | 750kg            |
| <b>DPAK 6</b>                         | Dynamic 6 with Wire Rope                   | 6.0mm         | 5.0m        | 1,750kg          |

GPAK 3: A1565  
GPAK 4: A1570



## Anchor

The Gripple Anchor creates a secure, fixed anchoring point below the ground. No pre-digging or ground preparation is required, dramatically reducing installation time.

- Designed for drive efficiency and maximum load capacity
- Streamlined profile for minimal soil disturbance
- Suitable for a variety of soil types
- Speed of installation delivers significant time and labour savings
- Zinc aluminium wire rope for maximum corrosion resistance



Anchor seated on Gripple Drive Too



Anchor being driven into the ground

| TYPE     | WIRE ROPE DIAMETER | WIRE ROPE LENGTH |
|----------|--------------------|------------------|
| Anchor 4 | 4.00mm             | 1.0m             |
|          | 4.00mm             | 1.5m             |

Load is dependent on the soil quality. Anchor is not suitable for hail net structures.

Anchor: A1560



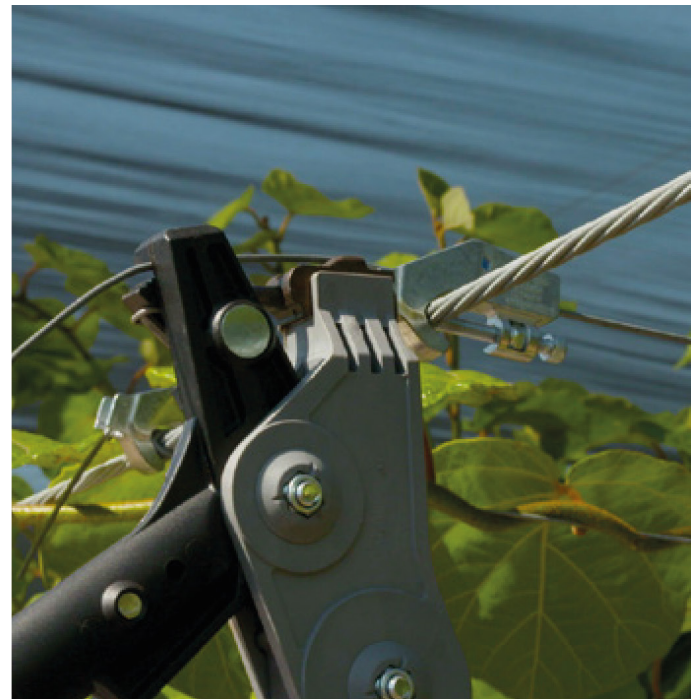
**GP90**

Quickly joins and tensions a line wire to a perpendicular boundary cable or bar; ideal for the creation of overhead catenaries for supporting shade cloth and hail netting, or supporting canopy grown and dried on the vine fruits.

- Easier re-tensioning and re-positioning of wires when compared to traditional methods
- High load capability can handle heavy crops and resist wind/hail damage
- Eliminates tying and knotting, ideal for high tensile steel wire
- Compatible with existing Gripple tensioning tools



GP90 on fruiting wires.



GP90 - Tensioning using Gripple Torq Tool.

| PRODUCT | BOUNDARY CABLE / BAR RANGE | CROSS WIRE RANGE | MAXIMUM LOAD |
|---------|----------------------------|------------------|--------------|
| GP90    | 6.00mm - 16.0mm            | 1.8mm - 4.0mm    | 600kg        |

Product not held in stock, can be ordered may affect lead times

Copyright © 2018 McVeigh Parker. All Rights Reserved.



## Find your wire solution

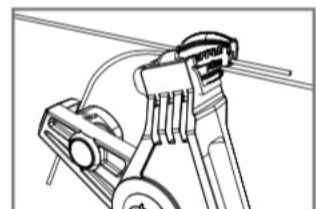
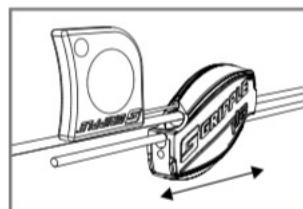
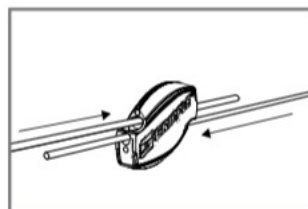
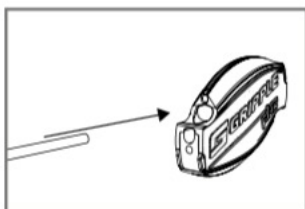
Use our guide to match your wire with the correct Gripple product.

| APPLICATION                 | WIRE RANGE                          | JUMBO | GRIPPLE PLUS LARGE | DYNAMIC 4 | DYNAMIC 6 | GPAK CLASSIC | DPAK 4 | DPAK 6 | GP90 | MAX WORKING LOAD |
|-----------------------------|-------------------------------------|-------|--------------------|-----------|-----------|--------------|--------|--------|------|------------------|
| Join, Tension & Repair      | 2.50mm - 3.15mm<br>12½ SWG - 10 SWG | ✓     |                    |           |           |              |        |        |      | 600kg            |
|                             | 3.25mm - 4.20mm<br>10 SWG - 7½SWG   |       | ✓                  |           |           |              |        |        |      | 600kg            |
| Bracing                     | ø 4.00mm                            |       | ✓                  |           |           | ✓            |        |        |      | 600kg            |
|                             |                                     |       |                    | ✓         |           |              | ✓      |        |      | 750kg            |
|                             | ø 4.75mm                            |       |                    | ✓         |           |              |        |        |      | 1,000kg          |
|                             | ø 6.00mm                            |       |                    |           |           | ✓            |        | ✓      |      | 1,750kg          |
| Structural & Canopy Support | 1.8mm - 4.00mm<br>15 SWG - 8 SWG    |       |                    |           |           |              |        |        | ✓    | 600kg            |
|                             | 4.00mm                              |       |                    | ✓         |           |              |        |        |      | 750kg            |
|                             | 4.75mm                              |       |                    | ✓         |           |              |        |        |      | 1,000kg          |
|                             | 6.00mm                              |       |                    |           |           | ✓            |        |        |      | 1,750kg          |

Please note: Recommendations are based on typical installations. Longer rows, heavy crops or exposed areas may require a different product. seek advice first.

## Technical Advice & Installation

### Gripple Plus range (featuring Setting Key adjustment)

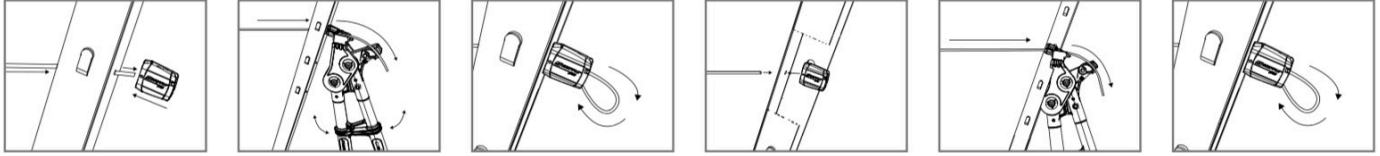


- Apply and re-tension with a tensioning tool (leave at least 75mm tail wire)
- Reposition before applying tension using a Setting Key



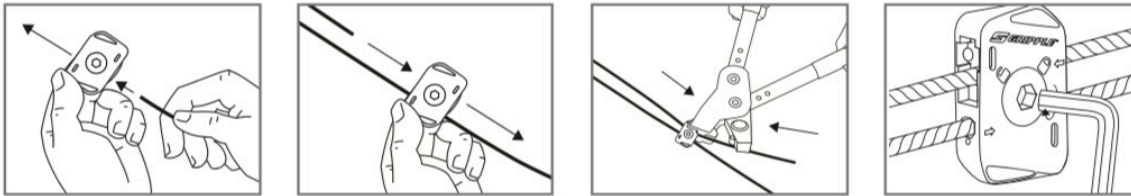
**GP No. 1 & No. 2 - Installation**

**Adaptor (Inside metal post)**



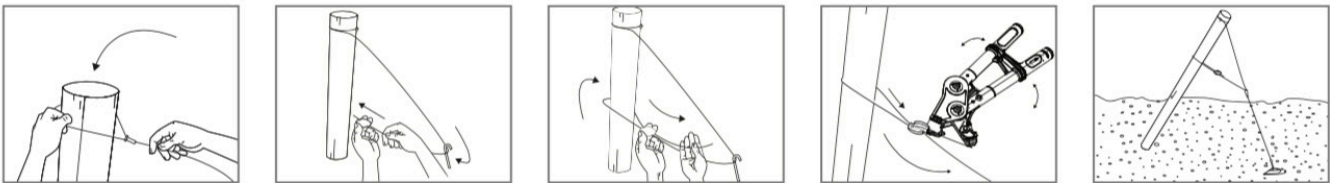
- If the post is installed 'open-side-out', there is a handy adaptor that can be fitted to the tool to make tensioning easier

**Dynamic Range**



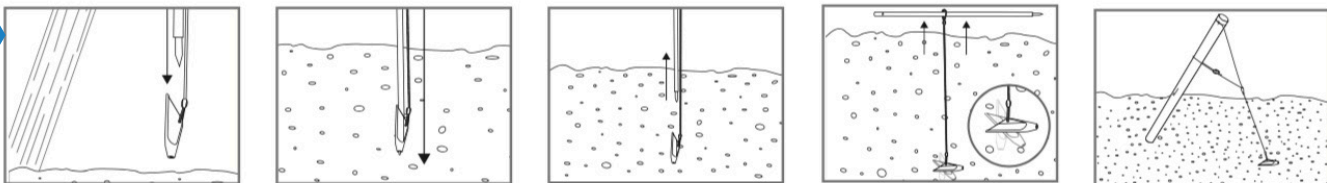
- Use hex key supplied to lock both channels simultaneously
- Unlock an re-tension without releasing the load

**GPAK / DPAK**



- Combine with an Anchor for a complete anchoring solution that's simple and fast to install

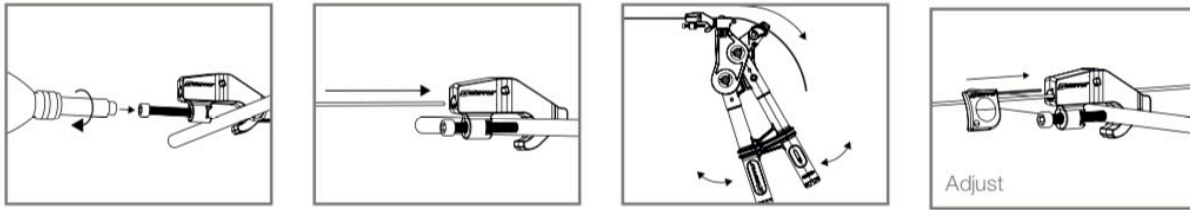
**Anchor**



- Always drive the Anchor fully into the ground, to a depth of at least 1m
- For even quicker installation of Gripple Anchors, use the Gripple Petrol Driver

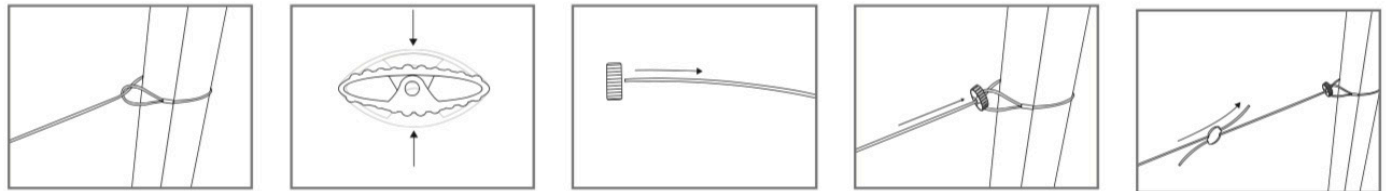


**GP90**



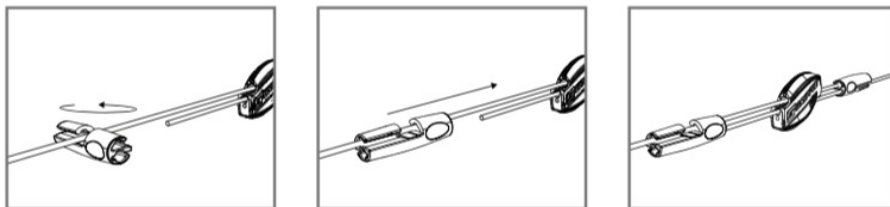
- Use a cordless drill with extended 5mm hex drive bit to quickly install product
- Do not apply full tension to cross wires, to allow for additional crop lod of wind lift

**Concrete Post Kit**



- Position collar tight to post to secure
- Apply tension with a tensioning tool

**Twister**



- A twister tidies tail wires and can be removed and re-attached to allow for re-tensioning