

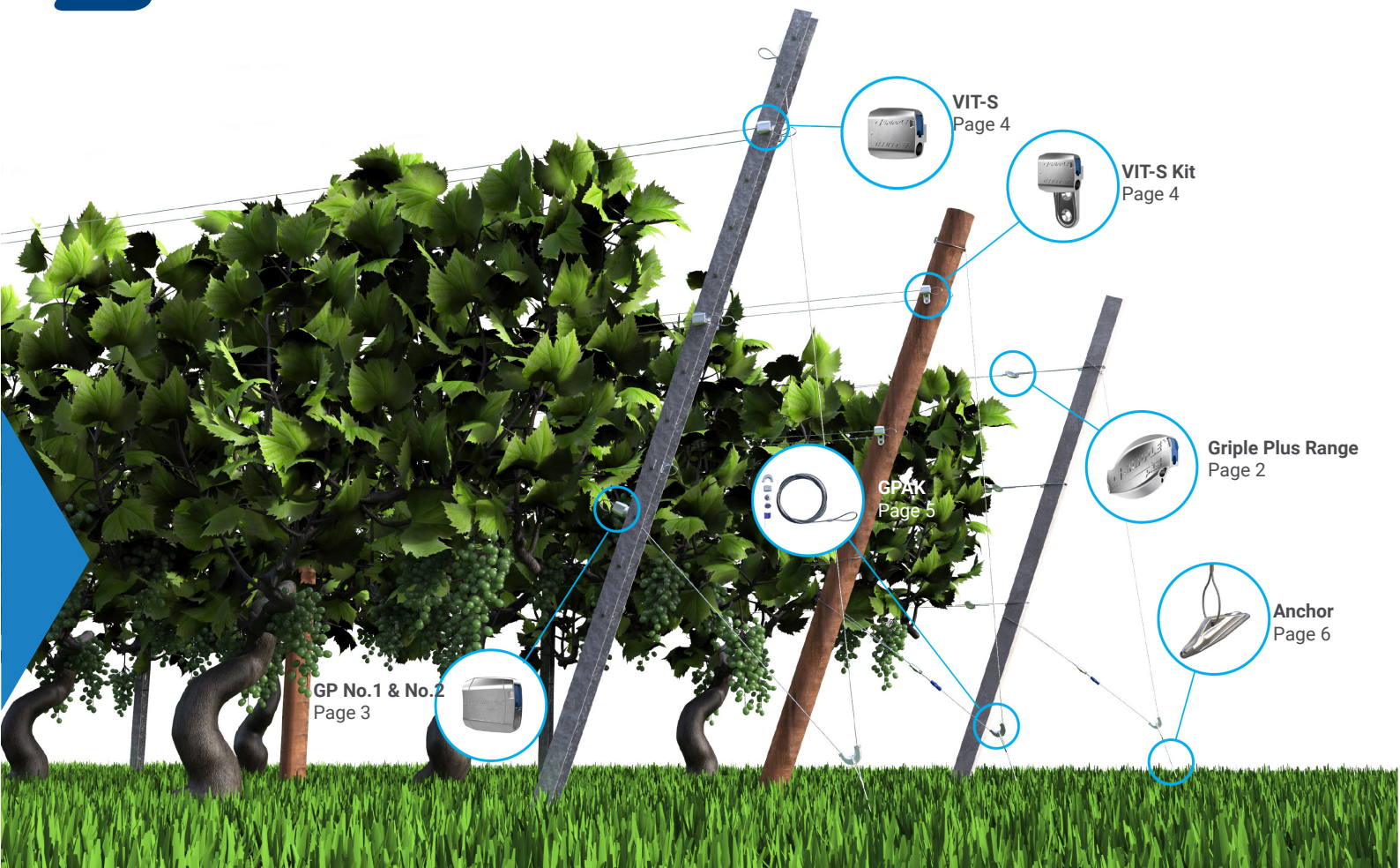


# GRIPPLE VINEYARD TRELLISING SOLUTIONS

## SPECIFICATION SHEET

As market leader in the joining and tensioning of wire, Gripple is renowned for providing innovative, cost-effective solutions for trellising applications. Gripple trellising products replace traditional methods, generating time and labour savings. Our range of products work with a wide variety of wires across all types of trellising.

- Tension
- Repair
- Anchor
- Brace





## Gripple Plus Range

The Gripple Plus range of wire joiners and tensioners is suitable for all trellis applications.

- Join and tension in one
- Eliminates tying and knotting wires, reducing installation time
- Ideal for use on high tensile and mild steel trellis wire
- Designed for high load holding and corrosion resistance
- Easily re-tensioned year-after-year



*Gripple Plus Medium - Twister securing tail wire*



*Gripple Plus Medium - Wire repair.*



*Jumbo - Standard join*

PRODUCT	WIRE RANGE	STANDARD WIRE GAUGE	MAXIMUM WORKING LOAD
<b>Gripple Plus Small</b>	1.40mm - 2.20mm	17SWG - 14SWG	300kg
<b>Gripple Plus Medium</b>	2.00mm - 3.25mm	14SWG - 10SWG	400kg
<b>Gripple Plus Large</b>	3.25mm - 4.20mm	10SWG - 7½ SWG	600kg
<b>Jumbo</b>	2.50mm - 3.15mm	12½ SWG - 10SWG	600kg



### GP No.1 & No.2

The Gripple GP No. 1 and No. 2 are designed with a flat leading edge to create a stable end stop for trellises which use metal end posts.

- Terminate and tension in one
- Ideal for use on steel wire and nylon monofilament
- High grade ceramic roller for corrosion resistance
- Spare integral channel allows safe tail wire return
- Tensioned using a Torq Tool and Adaptor in recessed applications



GP No.1 - Installed on a metal post



Adaptor - For use when the tensioner is installed on the inside of the post

PRODUCT	WIRE DIAMETER	STANDARD WIRE GAUGE	STANDARD WIRE GAUGE
GP No.1	1.80mm - 3.00mm	15SWG - 11SWG	400kg
GP No.2	3.00mm - 4.20mm	10½ SWG - 7½ SWG	600kg

Product not held in stock, can be ordered may affect lead times

Copyright © 2018 McVeigh Parker. All Rights Reserved.



**VIT-S**

The Gripple VIT-S is the quick and easy way to manage your fruiting wires. VIT-S works directly with metal and wooden end posts, replacing difficult and unreliable chains.

- Replaces cumbersome chains
- Manage the fruiting wires on both metal and wooden end post trellising systems
- Allows wires to be moved independently during the growing season
- Wires easily dropped to the ground for pruning
- Tension is easily applied by hand



VIT-S Kit - Installed on wooden post



VIT-S - Installed on metal post



VIT-S Kit - Installed on metal post

PRODUCT	POST TYPE	WIRE RANGE	STANDARD WIRE GAUGE	MAX WORKING LOAD
VIT-S	Metal	1.40mm - 2.60mm	17SWG - 12½ SWG	400kg
VIT-S KIT	Wooden & Metal			

VIT-S can be installed directly onto metal end posts or on wooden & metal posts when bought as a kit with the bespoke VIT-S Hook

Product not held in stock, can be ordered may affect lead times

Copyright © 2018 McVeigh Parker. All Rights Reserved.



**GPAK**

The Gripple Plus Anchor Kit (GPAK) is supplied as a ready-to-use kit comprising a pre-cut, fused length of wire rope and a Gripple tensioner.

- Suitable for wooden or metal post bracing
- Dual brace points for even load transfer
- Easily re-tensioned year-after-year
- Manufactured with zinc aluminium wire rope for corrosion resistance
- Consistent, professional finish

**GPAK 3: A1565  
GPAK 4: A1570**



*GPAK CLASSIC - Installed in a loop format with choke knot on a wooden post*



*GPAK PLUS M - Installed on a metal post*



*GPAK PLUS W - Installed on a wooden post*

PRODUCT	KIT CONTENTS	WIRE DIAMETER	WIRE LENGTH	MAX WORKING LOAD
<b>GPAK Classic (Wooden Post)</b>	Looped Wire Rope Gripple Plus Tensioner	3.0mm	2.5m	400kg
			3.5m	400kg
			4.5m	400kg
		4.0mm	5.0m	600kg
			6.0m	600kg
<b>GPAK Plus W (Wooden Post)</b>	Looped Wire Rope Wire Thimble Gripple Plus Tensioner Gripple Twister	3.0mm	2.5m	400kg
			3.5m	
			4.5m	
<b>GPAK Plus M (Metal Post)</b>	Looped Wire Rope Wire Thimble Wire Protectors x2 Gripple GP1 Tensioner	3.0mm	1.5m	400kg
			2.5m	
			1.5m	
			1.5m	

Copyright © 2018 McVeigh Parker. All Rights Reserved.



## Anchor

The Gripple Anchor creates a secure, fixed anchoring point below the ground. No pre-digging or ground preparation is required, dramatically reducing installation time.

- Designed for drive efficiency and maximum load capacity
- Streamlined profile for minimal soil disturbance
- Suitable for a variety of soil types
- Speed of installation delivers significant time and labour savings
- Zinc aluminium wire rope for maximum corrosion resistance



Anchor seated on Gripple Drive Tool



Anchor being driven into the ground

TYPE	WIRE ROPE DIAMETER	WIRE ROPE LENGTH
<b>Anchor 3</b>	3.00mm	1.0m
		1.5m
<b>Anchor 4</b>	4.00mm	1.0m
		1.5m

*Load is dependent on the soil quality*

**Anchor: A1560**

Copyright © 2018 McVeigh Parker. All Rights Reserved.



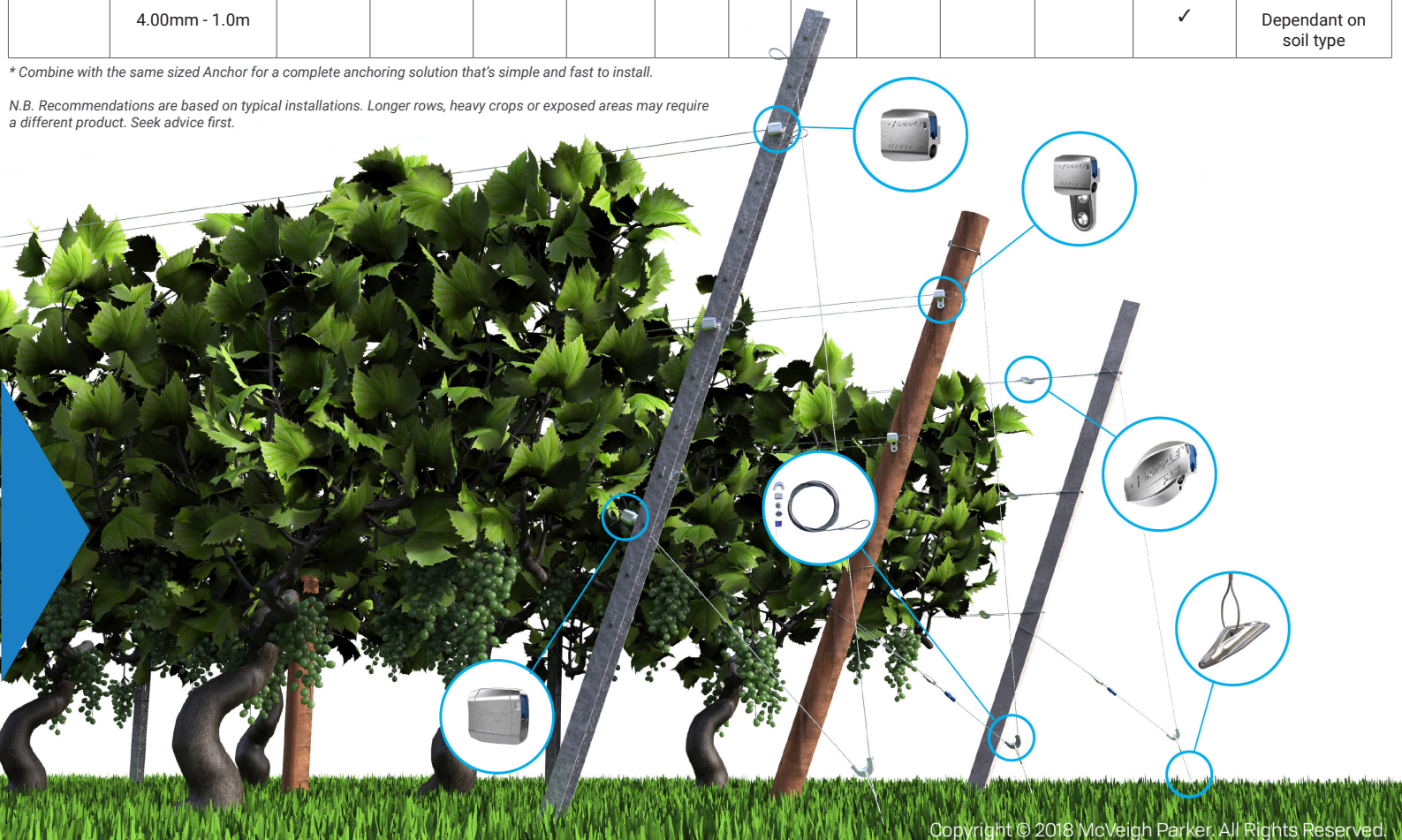
### Find Your Solution

Use our guide to match your wire with the correct Gripple product.

WIRE TYPE	WIRE RANGE	GRIPPLE PLUS SMALL	GRIPPLE PLUS MEDIUM	GRIPPLE PLUS LARGE	JUMBO	VIT-S	GP NO.1	GP NO.2	GPAK3 + W/M*	GPAK CLASSIC	ANCHOR 3	ANCHOR 4	MAX WORKING LOAD
Join, Tension & Repair	1.40mm - 2.20mm / 17SWG - 14 SWG	✓											300kg
	1.40mm - 2.60mm / 17SWG - 12½ SWG					✓							400kg
	1.80mm - 3.00mm / 15SWG - 11SWG						✓						400kg
	2.00mm - 3.25mm / 14SWG - 10SWG		✓										400kg
	2.50mm - 3.15mm / 12½ SWG - 10SWG					✓							600kg
	3.25mm - 4.20mm / 10SWG - 7½ SWG				✓				✓				600kg
Bracing	3.00mm - 4.5m		✓				✓		✓	✓			400kg
	4.00mm - 5.0m			✓				✓		✓			600kg
Anchoring	3.00mm - 1.0m										✓		Dependant on soil type
	4.00mm - 1.0m											✓	Dependant on soil type

\* Combine with the same sized Anchor for a complete anchoring solution that's simple and fast to install.

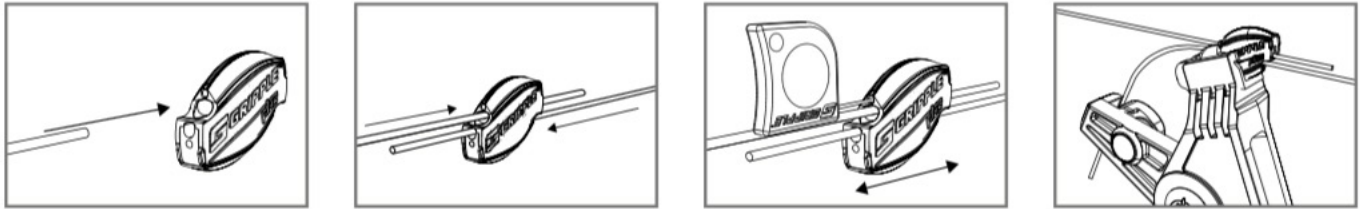
N.B. Recommendations are based on typical installations. Longer rows, heavy crops or exposed areas may require a different product. Seek advice first.





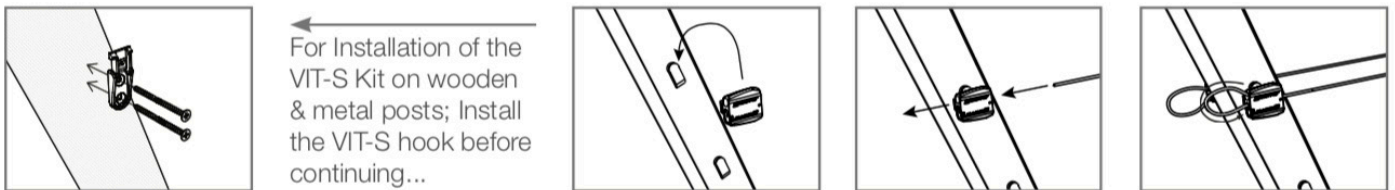
## Technical Advice & Installation

### Gripple Plus range (featuring Setting Key adjustment)



- Apply and re-tension with a tensioning tool (leave at least 75mm tail wire)
- Reposition before applying tension using a Setting Key

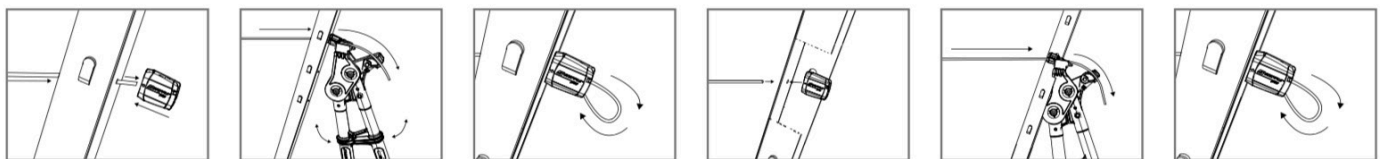
### VIT-S Installation



- Loop the tail wire back into the unit to provide a safe, neat finish
- Install additional VIT-S Hooks to allow positioning up and down the post

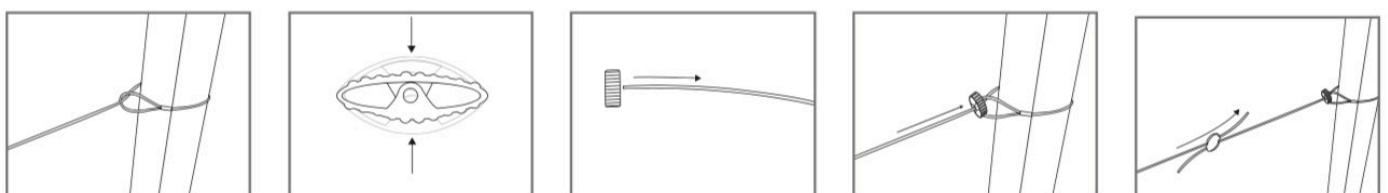
### GP No. 1 & No. 2 - Installation

### Adaptor (Inside metal post)



- If the post is installed 'open-side-out', there is a handy adaptor that can be fitted to the tool to make tensioning easier

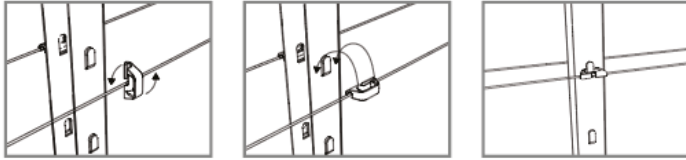
### Concrete Post Kit



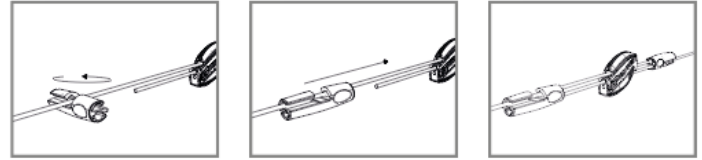
- Position collar tight to post to secure
- Apply tension with a tensioning tool



**Wire Guard - Installation**

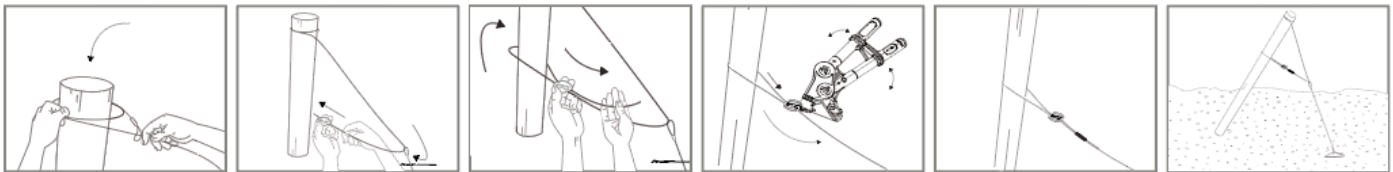


**Twister- Installation**

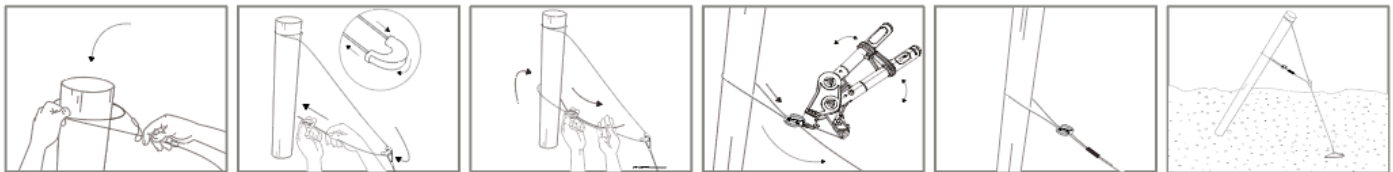


- Wire Guard can also be used on wooden & metal posts when used in conjunction with the VIT-S Hook
- A Twister tidies tail wires and can be removed and re-attached to allow for re-tensioning

**GPAK Classic - Installation**

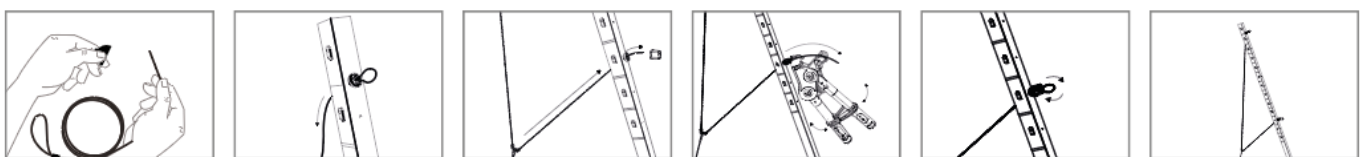


**GPAK Plus W - Installation (Wooden Post)**



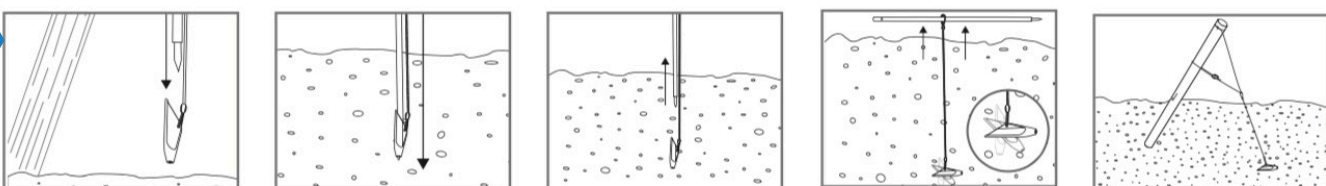
- Combine with an Anchor for a complete anchoring solution that's simple and fast to install

**GPAK Plus M - Installation (Metal Post)**



- Combine with an Anchor for a complete anchoring solution that's simple and fast to install

**Anchor**



- Always drive the Anchor fully into the ground, to a depth of at least 1m
- For even quicker installation of Gripple Anchors, use the Gripple Petrol Driver