

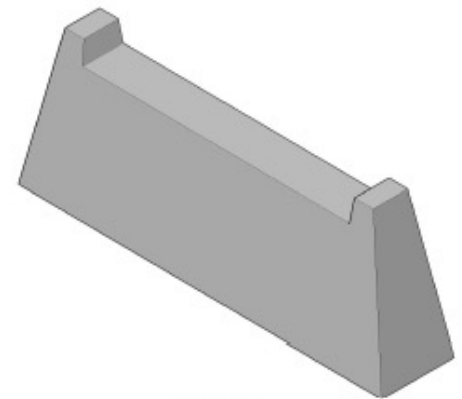
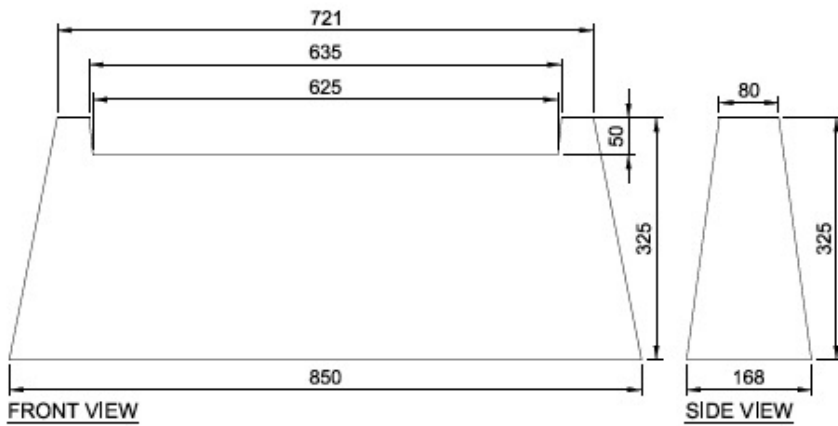
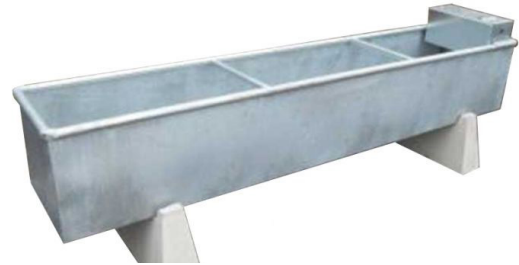


CONCRETE TROUGH SUPPORT

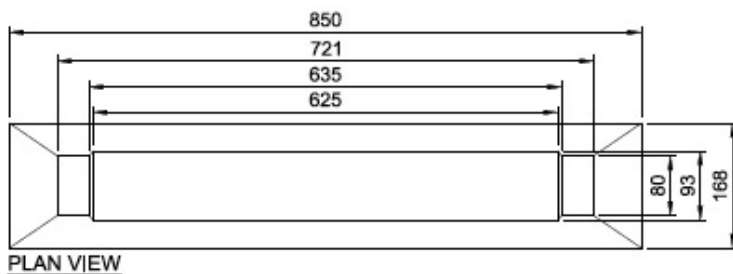
SPECIFICATION SHEET

These free-standing reinforced concrete trough supports will effectively support a standard galvanized water trough to the correct height for livestock to drink from.

Concrete Trough Support 600mm (ideal for larger troughs)



3D VIEW



***APPROX WEIGHT**
79Kg (+5%)

Specifications 600mm

Width - 850mm (external) 721mm (internal)
 Depth - 168mm
 Height - 325mm

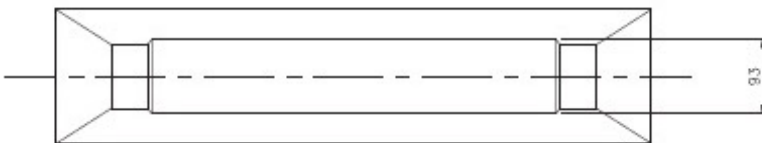
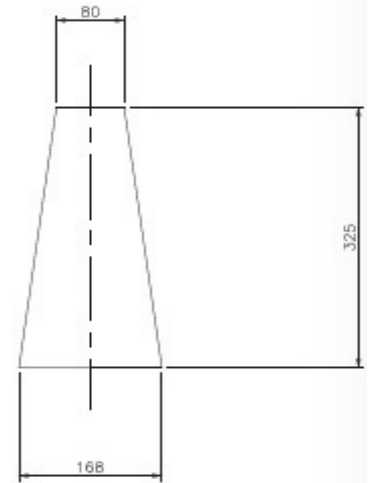
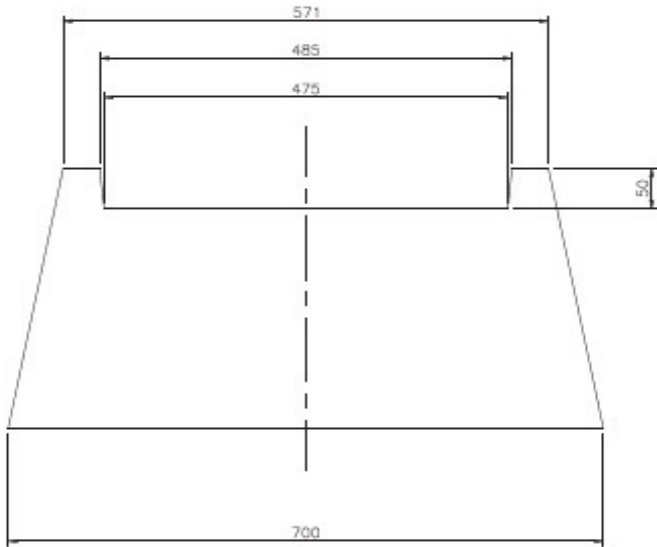
Designed to take a standard steel trough (600mm wide)

We recommend

2 supports for 1.2m (4ft) up to 1.8m (6ft) long troughs
 3 supports for 2.4m (8ft) up to 3.05m (10ft) long troughs



Concrete Trough Support 460mm



Specifications 460mm

Width - 700mm (external) 604mm (internal)
Depth - 170mm
Height - 320mm

Designed to take a standard steel trough (460mm wide)

We recommend -

2 supports for 600mm (2ft) up to 1800mm (6') troughs
3 supports for 2440mm (8ft) up to 3050mm (10ft) troughs

