

 **McVeigh Parker**  
Farming and Fencing Specialists

**CATTLE GRIDS**  
THE ORIGINAL QUICK FIT CATTLE GRID

## Installation Guide

[www.mcveighparker.com](http://www.mcveighparker.com)

CATTLE GRIDS

Table of Contents

**Installation Guide**

|  |   |
|--|---|
| What's in the bag?                           | 3 |
| Securing the bolts                           | 4 |
| Securing the bolts (Highway/ 120T + Edition) | 4 |
| Installing the top sections                  | 5 |

**Installation Guide- Deer Grid**

|                                  |   |
|----------------------------------|---|
| How do the grids arrive on site? | 6 |
|----------------------------------|---|

**Installation Guide- Cattle Grid**

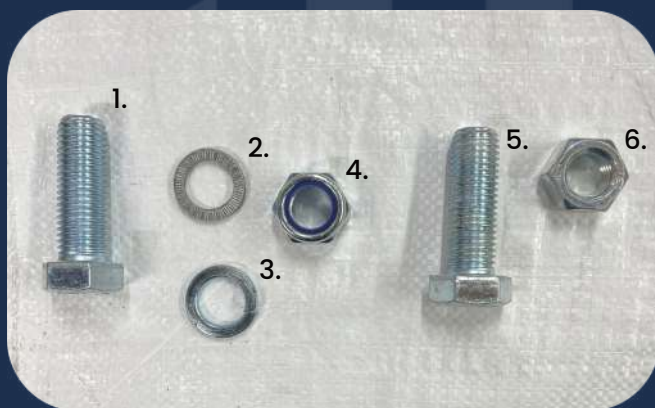
|                       |    |
|-----------------------|----|
| 1st Stage             | 10 |
| 2nd Stage             | 11 |
| 3rd Stage             | 12 |
| 4th Stage             | 13 |
| 5th Stage             | 14 |
| Concrete Installation | 14 |

CATTLE GRIDS

## Installation Guide

The simplicity of the Cattle & Deer Grids is unmatched but here is a helpful guide to some very important stages of the installation.

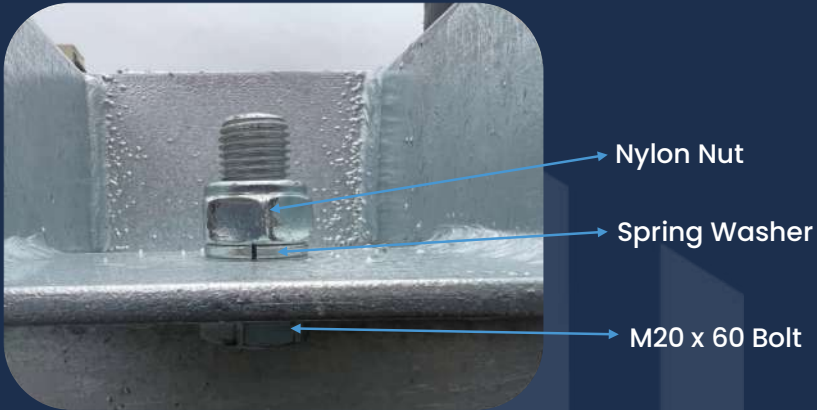
### What's in the bag?



1. M20 x 60 bolt
2. Locking washer (highway unit only)
3. Spring washer
4. Nylon nut
5. M20 x 60 bolt
6. Plain M20 nut (2.7m+ jump grid only)

## Securing the bolts

Each grid is supplied with a tailored number of M20 bolts, spring loaded washers and nylon nuts (highway units will have special locking washers in addition to spring). Please find below an image detailing the correct set up for them.



## Securing the bolts (Highway/120T + Edition)



## Installing the top sections

A crucial part of the installation is ensuring the grid tops are correctly positioned in the base frame. This is done by matching the numbers on the top section with those on the base frame as per picture below.



CATTLE GRIDS

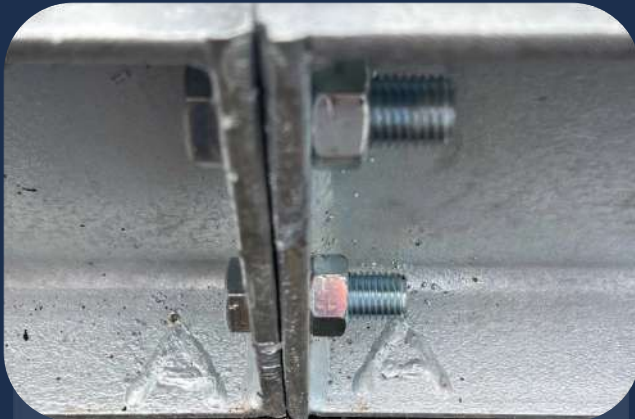
**Installation Guide- Deer Grid**

**How do the grids arrive on site?**

Pictured below is how the grid will arrive on site. The base frame will come in two sections for transport along with 4 top sections that bolt inside. The most practical way to remove this from the lorry is with a forklift, inserting the forks below the bottom beam and lifting the unit in one, please check the lifting weights and lifting capacity of your vehicle before attempting this. If your equipment cannot lift the complete unit it has be removed per section, the unit weights are available by request from our office.



Once you have excavated the pit and laid a hardcore foundation/ concrete pad (depending on your chosen method) the base frame can now be bolted together to form one complete unit, you are supplied with 8 M20 x 60 Sets and Plain Nuts for this. Pictured below is the unit complete with the bolts secured in place. It is crucial the base is secured correctly. Match up the letter found on the base like below, for example on this grid it is A + A.



Once the base frame has been installed you can now begin lowering the top sections into the frame. These again must be installed correctly and will be issued with numbers that correspond with the base so match these up to ensure the correct fit. For example, this grid has tops 1,2,3 and 4. Please note depending on the production number, these will not always be 1,2,3,4 but the principle remains the same.



Finally, secure these tops into the frame with the correct fixings supplied, drop your side rails into the sockets (if you ordered the optional side railings) and your Quickfit Deer Grid is ready for immediate use (hardcore installation ready for immediate use, if you are installing using concrete, please ensure the concrete has cured before using.)



CATTLE GRIDS

**Installation Guide – Cattle Grid**

Photos are courtesy of A.C Bufton Landscape Gardening and Groundworks.

**1st Stage**

Excavate a pit to take the size of grid, 30 inches deep and remove excavation to edge of site and level off.



## 2nd Stage

Supply and lay 100mm perforated drain in pit to discharge any accumulation of water (if required). Supply and lay hardcore in base of pit and fully consolidate (12 inches when consolidated).



There are 150mm outlet holes in the outside of the base to pipe excessive water to a ditch or drain if needed. The grid frame can now be off-loaded and carefully lowered into the pit.

### 3rd Stage

The grid sections are then placed on top of the grid frame and are retained in position by a Steel Flat up-stand and secured using the bolts provided.



## 4th Stage

The wing panels can then be fitted in slots provided, thereafter the area around the grid frame is back filled with hardcore and consolidated.



## 5th Stage

Three hours later. The grid is ready for immediate use.



### Concrete Installation (a requirement for the highway units)

Frame to be bedded on a minimum 150mm thick slab, RC32/40 concrete mix to B58500 with A193 fabric top and bottom, 300mm laps with 40mm cover cast on suitable base of 150mm minimum layer of well compacted MOT Type 1 stone hardcore.

# Maintenance Schedule

## **Introduction**

At Cattle Grids Ltd we manufacture and design our products to have little to no maintenance during their lifetime but to maintain their performance and prolong their life, inspections need to be routinely carried out. Whilst carrying out these inspections it is important to record the conditions of the fixings and parts to replace where necessary.

Should you require new fixings there's no need to worry, we have plenty of stock at our warehouse that we can send out for next-day delivery. Please use the contact methods below for any further advice.

## **General Advice**

Depending on location it is completely normal for debris/sediment to build up in the pit of your cattle grid but this must not reach a level where it can affect the performance of your grid. To adhere to BS4008:2006 you have to maintain a minimum pit depth of 250mm, our grids exceed this at 355mm but, should your grid fill to leave a depth below this figure it will need to be cleaned out as soon as possible. This has been made easy by our Quick-fit design and video instructions can be found on our FAQ page.

## **Private Track Grids**

These grids are not to be installed on a public highway and as such do not require to be inspected per any highway codes but in the interest of health and safety it is paramount that these grids are maintained and inspected as per our guidance.

Depending on use we recommend an inspection of the grid every 6-12 months, this would be both on foot (please take care when navigating the grid, especially in winter conditions) and a driven inspection for any moving parts and/or deterioration. If any defects are found please contact us for replacements as soon as possible. Fixings should be checked for tightness and retorqued as required. We recommend logging all data every visit so that you can re-check specifics on the next inspection.

## **Highway Grids**

Grids installed on a public highway should be maintained and inspected per the Highway Act 1980.

Once the grid has been installed we would recommend that the grid has an inspection 24 hours following initial use to check and tighten fixings where necessary. Again, after 7 days revisit to ensure fixings have remained tight. We use specifically designed locking washers partnered with nylon nuts to help reduce the risk of fixings becoming loose. Any time after this period, maintenance and inspection should be per the above Highway Act.



**McVeigh Parker**  
Farming and Fencing Specialists

[www.mcveighparker.com](http://www.mcveighparker.com)